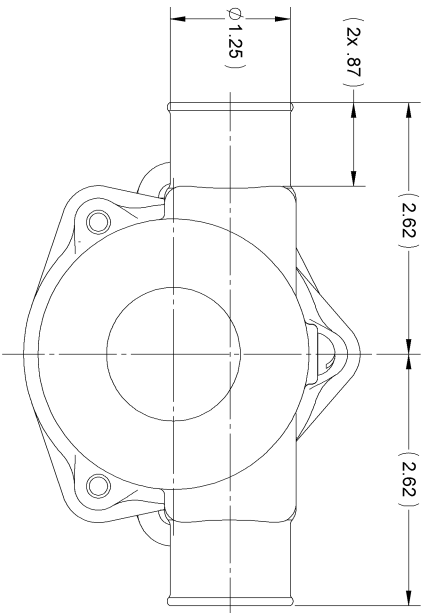
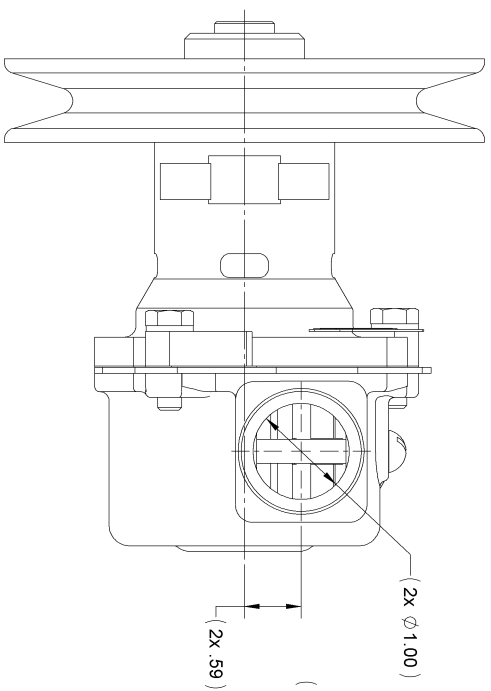
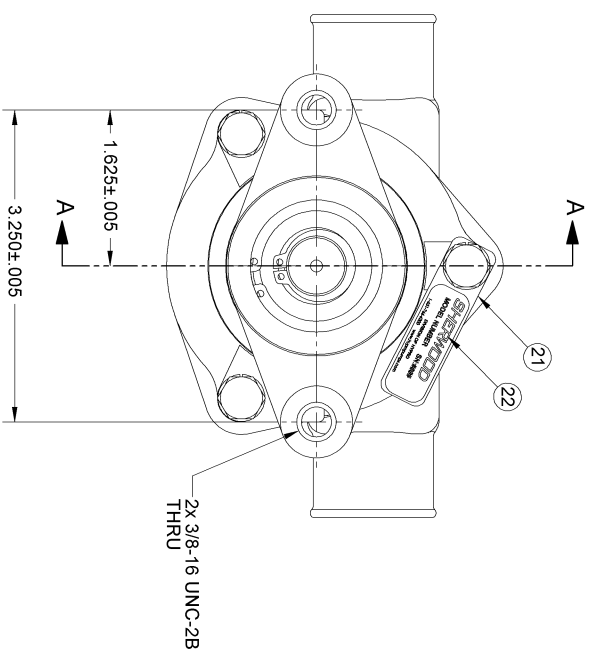
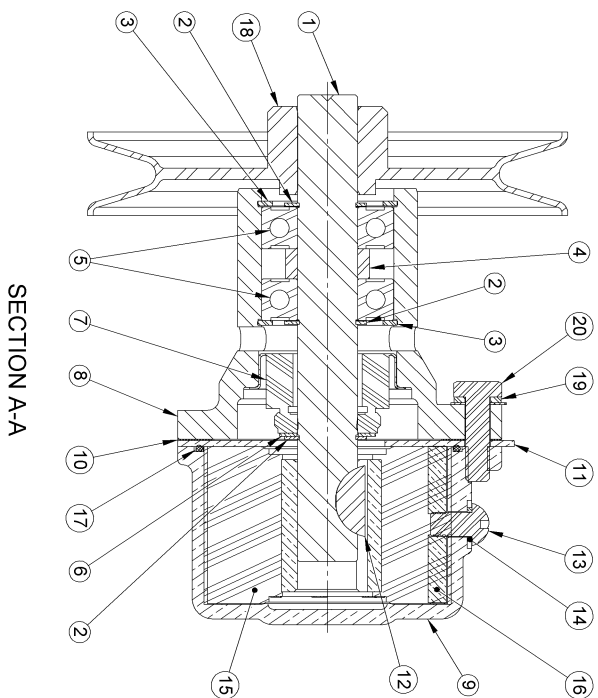
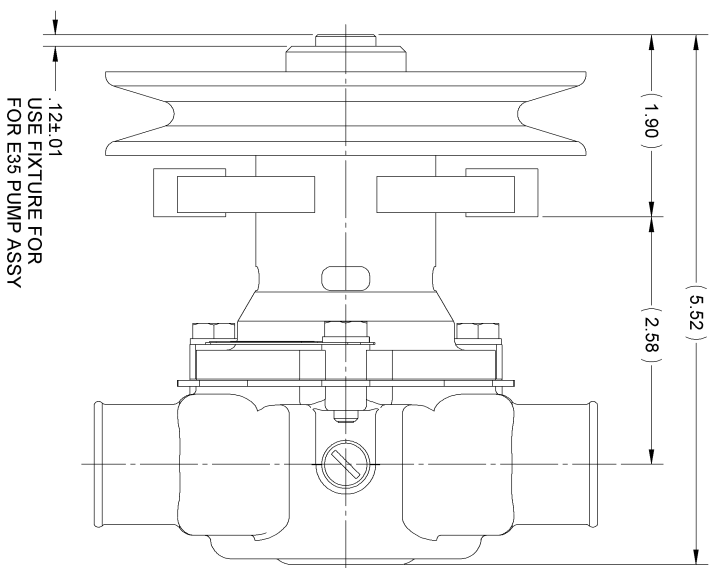


ITEM NO.	PART NUMBER	DESCRIPTION	QTY.
1	12596	SHAFT	1
2	04258	EXT. RETAINING RING	3
3	04259	INT. RETAINING RING	2
4	05133	SPACER	1
5	12211	BALL BEARING	2
6	04254	FLAT WASHER	1
7	12314	TYPE 6A SEAL/SEAT ASSY	1
8	12227	BODY	1
9	12228	HOUSING	1
10	12855	GASKET	1
11	12856	WEAR PLATE	1
12	04432	WOODRUFF KEY	1
13	19995	SCREW 1/4-20 ROUND HD	1
14	19996	CAM WASHER	1
15	10615	RUBBER IMPELLER	1
16	10944	CAM	1
17	12231	O-RING	1
18	14992	PULLEY	1
19	12710	LOCKWASHER	3
20	12857	1/4-20 HHCS	3
21	13285	TAG	1
22	23083	LABEL	1

NOTES:

1. APPLY BEAD OF PERMATEX AROUND THREADED HOLE IN CAM PRIOR TO ASSEMBLY. (ITEM 16).
2. TO PROVIDE MAXIMUM SHAFT TO PULLEY BREAK AWAY TORQUE THE SHAFT (ITEM 1) MUST BE HELD SQUARE WITH THE PULLEY HUB (ITEM 18) WHEN THEY ARE PRESSED TOGETHER. SHEARING OF METAL WILL REDUCE BREAK AWAY TORQUE.
3. USE WATER ONLY WHEN INSTALLING TYPE 6A SEAL/SEAT ASSY. (ITEM 7).
4. USE COOLANT TO AID IN INSTALLATION OF RUBBER IMPELLER, (ITEM 15).
5. TORQUE 1/4-20 HHCS TO 5 - 8 FT/LBS. (ITEM 20).
6. PRESSURE TEST TO 20 - 30 PSI.
7. PRINT "K90" AND "DATE CODE" ON LABEL. (ITEM 22).



REV.	DESCRIPTION	DATE	BY
L	6827	11/28/2007	RB
K	6195	6/22/2007	RB

PERFORMED TO SPECIFICATION 7. TORQUE CHARACTERISTICS
 ADD'D 1995 CAM WASHER & 1996 CAM WASHER DIMENSIONS CHANGED.
 NOTE: 3 MAX. USE BRACKETS FOR SOLID.
 ADD NOTES: PERFORM ON NEW COMPAK
 REVISION DESCRIPTION

SHERWOOD
 A Div. of *Hippo Corporation* A PENTAIR COMPANY
 375 Fifth Avenue NW, New Brighton, MN 55112 (651) 764-6300

DRAWING BASED ON ASME Y14.5M-1994 DO NOT SCALE PRINT
 THIRD ANGLE PROJECTION SCALE SHEET NUMBER 1 OF 1

REPLACES PART NO. REV.
 DWG BY: RBM DATE: 10/29/1982
 CHECKED BY: DATE:
 APPROVED BY: DATE:
 THIS DRAWING IS THE PROPERTY OF HIPPO AND WITHOUT WRITTEN AUTHORIZATION, IT IS NOT TO BE REPRODUCED OR TRANSMITTED IN ANY FORM OR BY ANY MEANS, ELECTRONIC OR MECHANICAL, INCLUDING PHOTOCOPYING, RECORDING, OR BY ANY INFORMATION STORAGE AND RETRIEVAL SYSTEM.

PART DESCRIPTION: RUBBER IMPELLER PUMP
 PART NUMBER: K90